



RHS PREMIUM WIRE EDM TOOLING

RHS-S7879



RHS Supervise3r-292.1 compatible

For horizontal clamping of rectangular workpieces 0-77 mm.

- Maximum torque 3 Nm (=torque generated in chuck coupling 10.8 Nm)

RHS-W7882



RHS SuperVice 3R-292.3 Compatible

For clamping rectangular workpiece up to 100 mm.

Tightening torque 7 Nm

RHS-S7827



RHS Vice 3R-613.6 Compatible

Movable jaws

For mounting round work pieces 15-55 mm

Rust-resistant.

Tightening torque 15 Nm.



RHS PREMIUM WIRE EDM TOOLING

RHS-S7825



RHS SuperVice Macro 3R-613.4 Compatible.

-Rust-resistant.

-Tightening torque 3 Nm

-Mount rectangular pieces 0-25mm in macro systems

RHS-S7823



System 3R 3R-207.6 Compatible V-Holder Macro

-For clamping round workpieces 8-70 mm,

-Rectangular workpieces 10-52 mm Macro

-Hardened.

-Rust-resistant.

RHS-S7821



System 3R 3R-A21944 Compatible angle block

- For vertical or horizontal mounting

- Intended for milling



RHS- WIRE EDM TOOLING

RHS-W6085



| | |
|--------------------------|------------------------|
| Product Size | 150×152.5×54mm |
| Material | Nippon Stainless Steel |
| Force Power | N/A |
| Air Pressure Requirement | N/A |
| Switch | N/A |
| Application | EDM/WEDM |
| OEM, ODM | Acceptable |

ADJUSTABLE WIRE-CUT EDM VISE (0~100MM)

RHS-W6079



| | |
|--------------------------|---|
| Product Size | 151x90x70mm |
| Material | Nippon Stainless Steel |
| Hardness | 50~53HRC |
| Air Pressure Requirement | N/A |
| Function | Assemble G centering plate can process mould insert and steel product |
| Application | CNC/EDM lathe |

Ø20~60MM TINY COMPONENT CLAMPING TOOL

RHS-W6074



| | |
|--------------------------|------------------------|
| Product Size | 210×152.5×54mm |
| Material | Nippon Stainless Steel |
| Force Power | N/A |
| Air Pressure Requirement | N/A |
| Switch | N/A |
| Application | EDM/WEDM |

ADJUSTABLE WIRE-CUT EDM VISE (0~150MM)



RHS- WIRE EDM TOOLING

RHS-W6069



| | |
|--------------------------|---|
| Product Size | 113x113x61mm |
| Material | Nippon Stainless Steel |
| Force Power | N/A |
| Air Pressure Requirement | N/A |
| Function | Assemble G centering plate can process 20~50mm mould insert and steel product |
| Application | CNC/EDM lathe |
| OEM, ODM | Acceptable |

20*50MM TINY COMPONENT CLAMPING TOOL

RHS-W6063



| | |
|--------------------------|--|
| Product Size | 153x108x55mm |
| Material | Nippon Stainless Steel |
| Hardness | 50~53HRC |
| Air Pressure Requirement | N/A |
| Function | Assemble G centering plate can process 50~100mm mould insert and steel product |
| Application | CNC/EDM lathe |
| OEM, ODM | Acceptable |

50*100MM TINY COMPONENT CLAMPING TOOL

RHS-EW5986



| | |
|----------------|--|
| Material | Nippon Stainless Steel |
| Repeatability | 0.01mm |
| clamping range | ø 40 x H 150 mm |
| compatible to | ER-016691 |
| Application | EDM/WEDM |
| Operation | To clamp parts in prismatic slot. Parallel and angular |

EROWA ER-016691 WIRE EDM VBLOCK HOLDER UNOSET COMPATIBLE



RHS Premium Wire EDM Tooling

RHS-W5994



| SPECIFICATION | |
|---------------|---|
| clamp size: | 0-75mm |
| Repeatabill | 0.005mm/100mm |
| Marterial: | stainless steel |
| Application | Mount On Wire EDM machine, such as Sodick , |
| | Makino, Agie Charmilles |

RHS Wire Edm Clamp Machine Vise

RHS-W5991



| SPECIFICATION | |
|----------------|---|
| clamp size: | 0-150mm |
| Repeatability: | 0.005mm/100mm |
| Marterial: | stainless steel |
| Application: | Mount On Wire EDM machine, such as Sodick , |
| | Makino, Agie Charmilles |

RHS-Wire EDM clamp machine vise

RHS-W7397



| SPECIFICATION | |
|-------------------|---|
| clamp size: | 0-150mm |
| Repeatability: | 0.005mm/100mm |
| Marterial: | stainless steel |
| Application: | Mount On Wire EDM machine, such as Sodick , |
| | Makino, Agie Charmilles |
| Equivalent to | 3R-292.6S |
| Tightening torque | 10Nm |

3R-292.6S wire EDM SuperVice Magnum Compatible



RHS Premium Wire EDM Tooling

RHS-W6021



| SPECIFICATION | |
|---------------|--|
| clamp size: | 0-150mm |
| Marterial: | stainless steel |
| Tolerance: | 0.005mm |
| Version | Precise adjustment to X, Y, Z axis. |
| | Easy and quick clamping for side grip. |
| Application | Suitable to wire-cut EDM, to be directly installed on the table. |
| Accessories | T hexa wrench x 1 pc |

Adjustable bench vise vertex 3 axis wire cut edm

RHS-W6013



| SPECIFICATION | |
|---------------|--|
| clamp size: | 0-150mm |
| Marterial: | stainless steel |
| Tolerance: | 0.005mm |
| Application | Mount On WEDM machine suitable for small parts |
| Item Weight | 12.13 pounds |

Stainless Precision Vise for Wire EDM Size 150

RHS-W5997



| SPECIFICATION | |
|---------------|--|
| clamp size: | 0-100mm |
| Marterial: | stainless steel |
| Accuracy: | 0.005mm/100mm |
| Application | Mount On WEDM machine suitable for small parts |

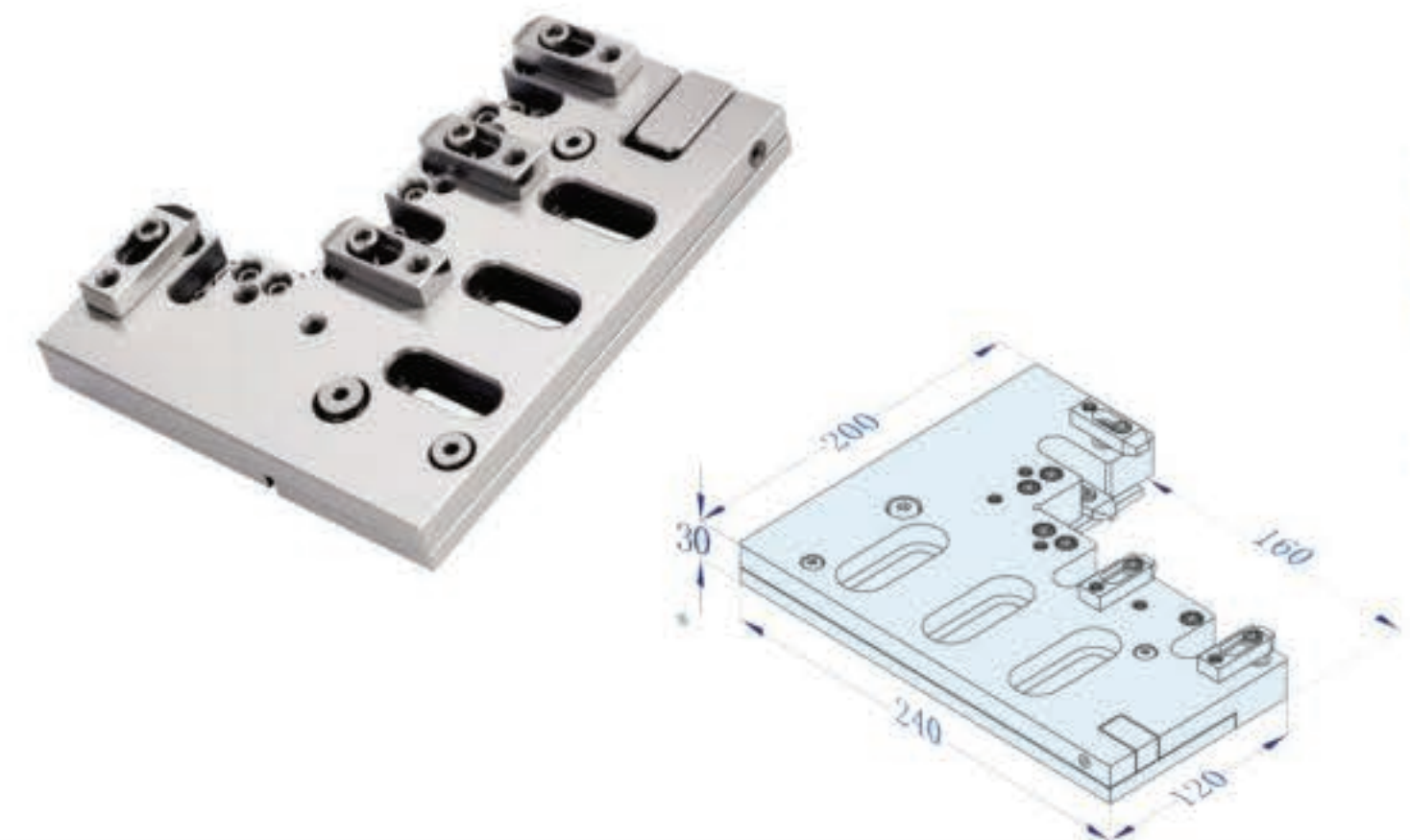
RHS- Wire EDM Clamp machine vise



RHS Premium Wire cut EDM Tooling

RHS-W5934

EDM machine Clamp Bench vise



| SPECIFICATION | |
|---------------|--|
| clamp size: | 0-160mm |
| Material: | stainless steel |
| Accuracy: | 0.005mm/100mm |
| Application | Mount On WEDM machine suitable for small parts |

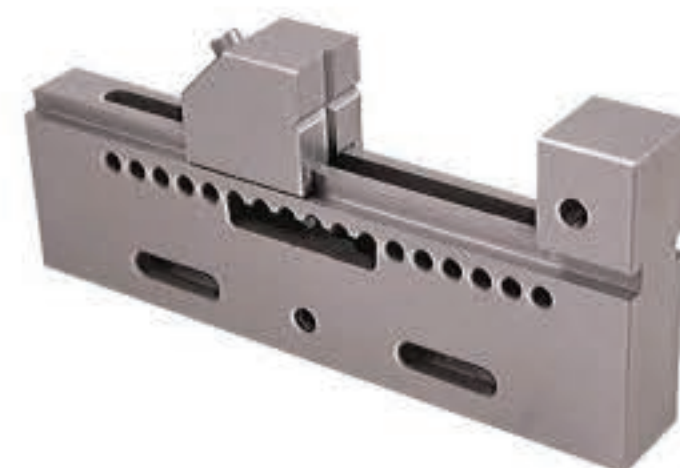
RHS-W5930



| SPECIFICATION | |
|---------------|--|
| clamp size: | 0-150mm |
| Material: | stainless steel |
| Accuracy: | 0.005mm/100mm |
| Application | Mount On WEDM machine suitable for small parts |

CNC Wire EDM machine vise

RHS-W5983



RHS Wire EDM Extension Clamp RHS-W5983

| SPECIFICATION | |
|---------------|-----------------------|
| clamp size: | 0-214mm |
| Material: | stainless steel |
| Accuracy: | 0.005mm/100mm |
| Application | Mount On WEDM machine |



RHS Premium Wire cut EDM Tooling

RHS-W5966



| SPECIFICATION | |
|---------------|-----------------------|
| clamp size: | 0-100mm |
| Material: | stainless steel |
| Accuracy: | 0.005mm/100mm |
| Application | Mount On WEDM machine |

RHS CNC EDM machine vise

RHS-W5969



| SPECIFICATION | |
|---------------|-----------------------|
| clamp size: | 0-100mm |
| Material: | stainless steel |
| Accuracy: | 0.005mm/100mm |
| Application | Mount On WEDM machine |

Stainless Precisions Vise for EDM

RHS-W5980



| SPECIFICATION | |
|---------------|--|
| clamp size: | 0-100mm |
| Material: | stainless steel |
| Accuracy: | 0.005mm/100mm |
| Application | Mount On WEDM machine |
| Suitable for | suitable for square and long parts. Adjustable in X Y Z slightly |

RHS Wire EDM Clamp machine square vise